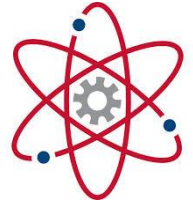


Project Lead The Way



Pine Creek High School is a PLTW Certified School!!!

We will offer the 1st class in the Biomedical PLTW Program in the fall of 2016:

Year 1 (2016-17)	PBS-Principles of Biomedical Sciences
Year 2 (2017-18)	HBS-Human Body Systems
Year 3 (2018-19)	MI-Medical Interventions
Year 4 (2019-20)	BI-Biomedical Innovations

Principles of Biomedical Science

--Student work involves the study of human biology, medicine, and an introduction to research processes.

--Students investigate a mysterious death and various health conditions including: heart disease, diabetes, sickle-cell disease, hypercholesterolemia, and infectious diseases.

The classroom . . .

Each student has his/her own laptop computer. There is no textbook!

Group work is essential. Students must be able to work well with others

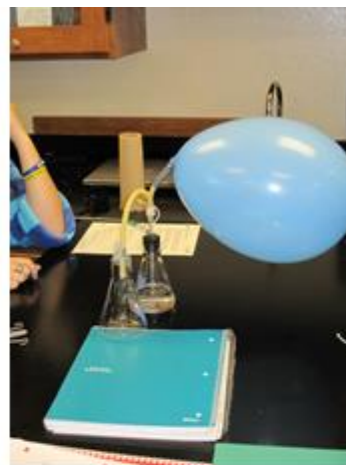


The curriculum is accessible on the computer at school and at home!



Simulated Crime Science-PBS





Human Body Systems

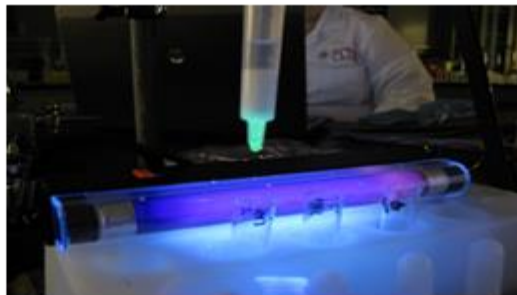
- Students study basic human physiology, especially in relationship to human health. A central theme is how the body systems work together to maintain internal balance and good health.
- Students use data acquisition software to monitor body functions and use the Anatomy in Clay[®] Manikens[®] to study body structure.



Medical Interventions

Study the variety of medical interventions involved in the prevention, diagnosis and treatment of disease as they follow the lives of a fictitious family.

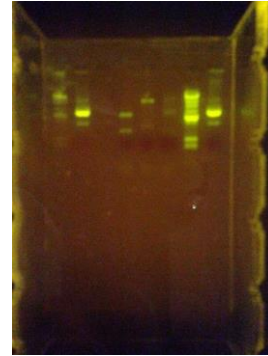
Student projects investigate interventions related to diagnostics, immunology, surgery, genetics, pharmacology, medical devices, and lifestyle choices.



Biomedical Innovations

Semester 1

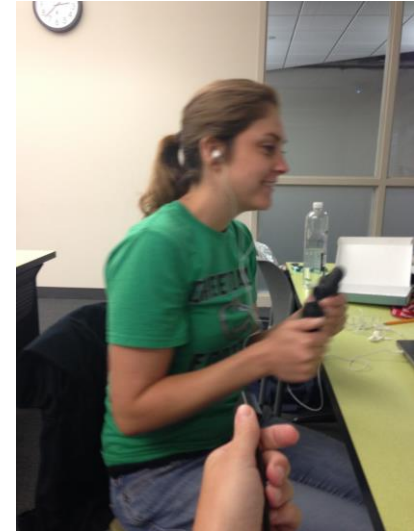
Students are presented with 8 problems that they have to solve by doing research, labs and design. These involve water quality testing, designing an emergency department, and determining the cause of an outbreak of a disease.



Biomedical Innovations

Semester 2

Students do an independent project. This could be a research project, internship or laboratory research experiment. Students will have a mentor from the medical profession working with them to complete this project.



Student Presentations



At the end of the year students give presentations to a live audience of medical and health professionals as well as parents, educators, administrators and peers. Their presentations are evaluated by the medical and health professionals.

Questions from the audience . . .

For more information contact

Mrs. Kelly Newcomb—Pine Creek High School

Kelly.newcomb@asd20.org

